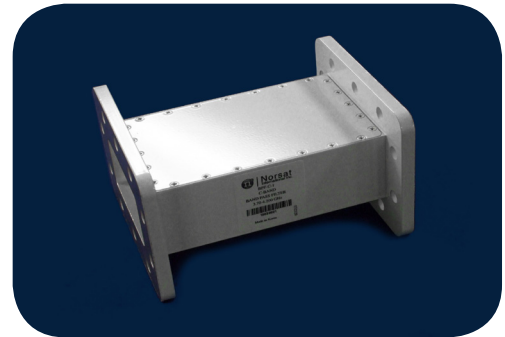




MICROWAVE COMPONENT

C-BAND BAND PASS FILTER



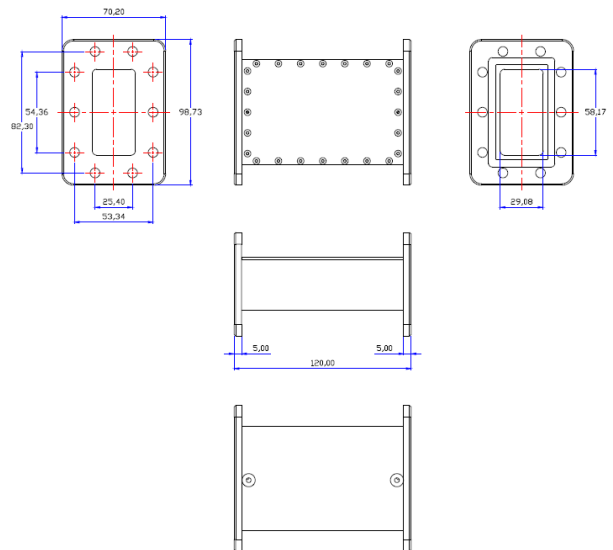
APPLICATIONS

- Rejects terrestrial interference in C-Band (5G, Radar and C-Band transmitter)
- Easily installed between the feed and LNB
- Suitable for use with Norsat's C-Band LNBs
- Environmentally sealed and moisture resistant (IP66)

SPECIFICATIONS (BPF-C-1)

Frequency range	3.70 to 4.20 GHz
VSWR	1.4 : 1 max
Insertion loss in band	0.5 dB max
Rejection	25 dB min at 3.650 GHz and 4.250 GHz 60 dB min at 3.550 GHz and 4.350 GHz 70 dB min at 3.500 GHz and 4.400 GHz
Waveguide flange	CPR-229G (input), CPR-229F (output)
Dimensions	120 (L) x 100 (W) x 70 (H) mm
Weight	< 650 g

MECHANICAL DRAWING



SPECIFICATIONS (BPF-C-2)

Frequency range	3.625 to 4.20 GHz
VSWR	1.4 : 1 max
Insertion loss in band	0.5 dB max
Rejection	25 dB min at 3.575 GHz and 4.250 GHz 60 dB min at 3.475 GHz and 4.350 GHz 70 dB min at 3.425 GHz and 4.400 GHz
Waveguide flange	CPR-229G (input), CPR-229F (output)
Dimensions	120 (L) x 100 (W) x 70 (H) mm
Weight	< 650 g



SPECIFICATIONS (BPF-C-3)

Frequency range	3.754 to 4.20 GHz
VSWR	1.4 : 1 max
Insertion loss in band	0.5 dB max
Rejection	25 dB min at 3.704 GHz and 4.250 GHz 60 dB min at 3.604 GHz and 4.350 GHz 70 dB min at 3.554 GHz and 4.400 GHz
Waveguide flange	CPR-229G (input), CPR-229F (output)
Dimensions	120 (L) x 100 (W) x 70 (H) mm
Weight	< 650 g

SPECIFICATIONS (BPF-C-4)

Frequency range	3.80 to 4.20 GHz
VSWR	1.4 : 1 max
Insertion loss in band	0.5 dB max
Rejection	25 dB min at 3.750 GHz and 4.250 GHz 60 dB min at 3.650 GHz and 4.350 GHz 70 dB min at 3.600 GHz and 4.400 GHz
Waveguide flange	CPR-229G (input), CPR-229F (output)
Dimensions	120 (L) x 100 (W) x 70 (H) mm
Weight	< 650 g

SPECIFICATIONS (BPF-C-BW36-CF)

- BPF-C-BW36-CF is used for interference inside the standard receiver bands
- The filter is a single transponder bandpass filter.
- The Centre Frequency (CF) is determined by the individual customer's requirements

Center Frequency (CF)	xxx MHz
Bandwidth	36 MHz
VSWR	1.4 : 1 max
Insertion loss in band	0.6 dB typ, 1.0 dB max at CF \pm 18 MHz
Rejection	25 dB min at CF \pm 68 MHz 60 dB min at CF \pm 168 MHz 70 dB min at CF \pm 268 MHz
Waveguide flange	CPR-229G (input), CPR-229F (output)
Dimensions	120 (L) x 100 (W) x 70 (H) mm
Weight	< 650 g